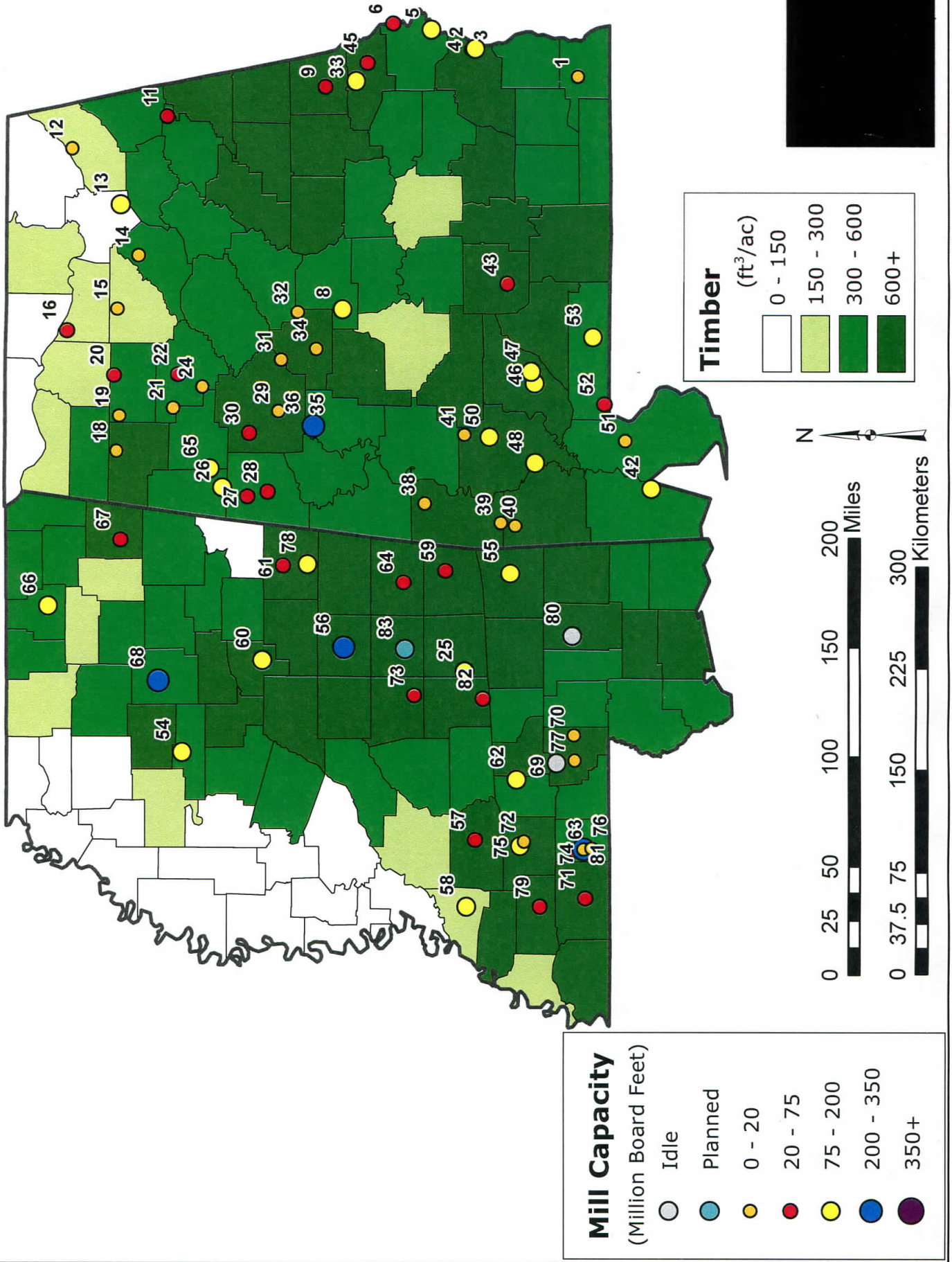


Alabama and Mississippi

Softwood Roundwood Inventory and Softwood Sawmill Capacity



Alabama and Mississippi

Mill I.D.	Name	Former name or DBA	Location	Capacity / Production (MMBF)					
				2011	2012	2013	2014	2015	2016
Planned Mills									
83	Biewer Lumber		Newton	MS					
Idled Mills									
69	GeorgiaPacificKoch Corp		Columbia	MS	115				
Timber Mills									
61	Barge For Prod		Macon	MS	29	26	26	26	28
63	Byrd Lum Co		Fernwood	MS	18	18	18	18	18
43	Coastal For Products	Chapman For Prod	Chapman	AL		60	60	60	60
67	Homan For Prod	Tri-State Lum Co	Fulton	MS	30	30	30	30	30
73	Jack Batte & Sons		Forest	MS	20	25	25	25	25
72	Lincoln Lum Co		Brookhaven	MS	5	5	5	5	5
2	M C Dixon Lum Co		Eufaula	AL	50	100	100	100	100
70	Rogers Lum Corp		Columbia	MS	8	8	8	8	8
18	Valley Lum Co		Hackleburg	AL	15	15	15	15	15
35	Westervelt Corp	Gulf States Pap	Moundville	AL	50	50	90	90	90
Stud Mills									
82	GeorgiaPacificKoch Corp		Taylorville	MS	67	67	67	67	67
26	Weyerhaeuser Co		Millport	AL	110	110	110	110	110
Dimension Mills									
59	Bazor Lum Co	Hankins Lum Co	Quitman	MS	65	65	65	65	65
64	Buchanan Lum	Mid South Lum Co	Meridian	MS	32	32	32	32	32
42	Canfor	Scotch & Gulf Lum Co	Mobile	AL	115	115	115	135	135
48	Canfor	Scotch & Gulf Lum Co	Jackson	AL	65	65	65	130	130
50	Canfor	Scotch & Gulf Lum Co	Fulton	AL	130	130	130	175	175
58	Canfor	Southern Lum Co	Hermanville	MS	86	86	86	86	90
45	Dudley Lum Co		Salem	AL		30	30	30	30
79	Franklin Tim Co		Bude	MS	47	47	47	47	47
46	GeorgiaPacificKoch Corp	Roy O Martin Lum Co	Mexia	AL	120	120	120	120	120
65	GeorgiaPacificKoch Corp		Fayette/Belk	AL	122	122	122	122	122
25	GeorgiaPacificKoch Corp		Bay Springs	MS	120	120	120	120	120
20	Grayson Lum Corp		Houston	AL	65	65	65	65	65
66	Hankins Inc		Ripley	MS	95	95	95	95	98
54	Hankins Lum Co		Grenada	MS	120		60	120	120
47	Harrigan Lum Co		Monroeville	AL	110	110	110	97	97
57	Hazlehurst Lum Co		Hazlehurst	MS	55	55	55	55	55
55	Hood Ind	Longleaf For Prod	Waynesboro	MS	170	170	170	170	170
62	Hood Ind	Joe N Miles & Sons	Silver Creek	MS	170	170	170	170	170
22	Jasper Lum Co		W Jasper	AL	95	95	95	75	75
71	Lincoln Lum Co	Mabry Lum Co	Liberty	MS	24	24	24	24	24
5	Mead Westvaco	Georgia Kraft	Cottonton	AL	153	153	153	153	153
28	Pate Lum Co		Carrollton	AL	22	22	22	22	22
75	Rex Lum LLC	Columbus Lbr Co	Brookhaven	MS		110	110	110	110
78	Shuqualak Lum Co		Shuqualak	MS	125	130	130	130	125
60	Southeastern Tim Prod	Packaging Corp	Ackerman	MS	59	76	76	76	80
13	Southern Parallel	Resolute FP	Albertville	AL			75	115	115
53	T R Miller Mill Co		Brewton	AL	120	120	120	120	120
41	Thomasville Lum Co	Coastal Lum Co	Thomasville	AL	20	20	20	20	20
8	West Fraser Tim Co	International Pap Corp	Maplesville	AL	115	115	115	115	120
33	West Fraser Tim Co	International Pap Corp	Opelika	AL	95	95	95	95	100
36	Westervelt Corp	Gulf States Pap	Moundville	AL	230	230	230	230	262
56	Weyerhaeuser Co		Philadelphia	MS	230	225	225	225	235
68	Weyerhaeuser Co		Bruce	MS	230	235	235	235	235
76	Weyerhaeuser Co	Cavenham	McComb	MS	240	245	245	245	245

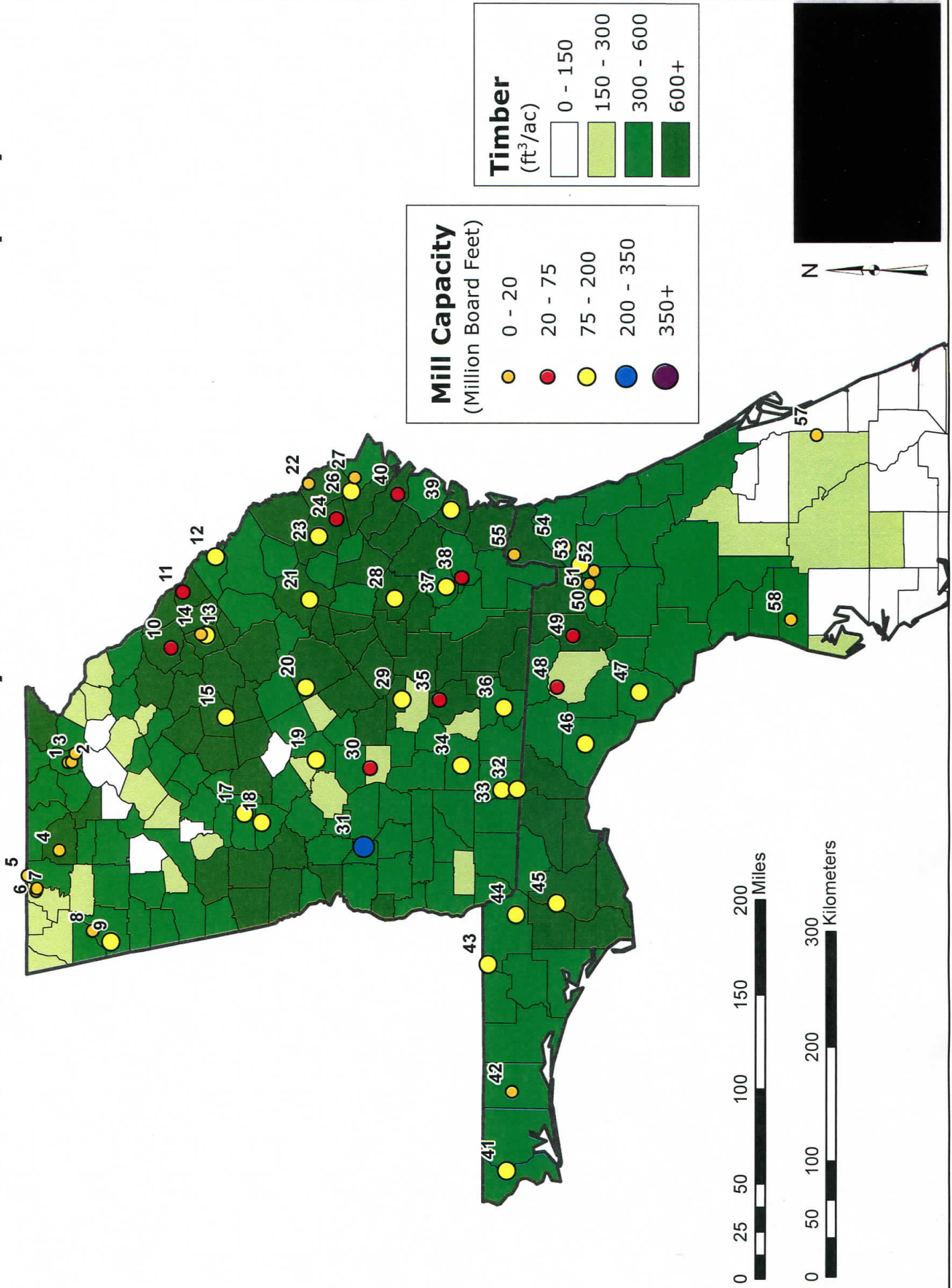
Alabama and Mississippi, cont

Mill I.D.	Name	Former name or DBA	Location		Capacity / Production (MMBF)					
					2011	2012	2013	2014	2015	2016
Board Mills										
38	Jachin Lum Co		Jachin	AL	15	15	15	15	15	15
34	Kornegay Lum Co		Centreville	AL	6	6	6	6	6	6
15	Littrell Bros Lum Co		Vinemont	AL	6	6	6	6	6	6
16	Littrell Lum Mill		Decatur	AL	24	24	24	24	24	24
27	McShan Lum Co		McShan	AL	27	27	27	27	30	30
81	Seago Lum Co	Three S Enterprises	McComb	MS	18	25	25	25	25	25
Specialty or Unknown										
11	Bennett Lum Co		Piedmont	AL	23	23	23	23	23	23
3	Brabham Lum Co		Eufaula	AL	13	13	13	13	13	13
51	Crosby Lum Co		Bay Minette	AL	20	20	20	20	20	20
1	Custom Lum Mfg Co		Dothan	AL	4	4	4	4	4	4
21	Earley Lum Co		Carbon Hill	AL	3	3	3	3	3	3
9	East Alabama Lum Co	Dudley Lum Co	Lafayette	AL	56	56	56	56	56	56
12	F G Lum Co		Sylvania	AL	3	3	3	3	3	3
77	Foxworth & Thompson		Foxworth	MS	4	4	4	4	4	4
4	Garrison Bros Lum Co		Eufaula	AL	15	15	15	15	15	15
19	Great Southern Ent		Haleyville	AL	7	7	7	7	7	7
31	KyKenKee		Vance	AL	9	9	9	9	9	9
39	Lassiter Lum Co		Silas	AL	6	6	6	6	20	20
24	LKL Lum Co	Guthrie Lum Co	Oakman	AL	20	20	20	20	20	20
74	Magnolia Lum Co		Fernwood	MS	7	7	7	7	7	7
40	Millry Mill Co		Millry	AL	14	14	14	14	14	14
14	Mooneyham Lum Co		Blountsville	AL	2	2	2	2	2	2
29	Pearson Lum Co		Tuscaloosa	AL	10	10	10	10	10	10
6	Phenix Lum Co		Phenix City	AL	40	40	40	40	25	30
32	Seaman Tim Co		Montevallo	AL	8	8	8	8	8	8
52	Swift Lum Co		Atmore	AL	40	40	40	40	40	40
30	W G Sullivan Lum Co		Northport	AL	28	28	28	28	28	28

Softwood Lumber (MMBF)	2011	2012	2013	2014	2015	2016
Estimated capacity	4,390	4,441	4,616	4,696	4,866	4,883
Reported output	na	na	na	na	na	na
Capacity utilization	na	na	na	na	na	na
Number of sawmills	70	71	73	73	73	73

Florida and Georgia

Softwood Roundwood Inventory and Sawmill Capacity



Florida and Georgia

Mill I.D.	Name	Former name or DBA	Location	Capacity / Production (MMBF)						
				2011	2012	2013	2014	2015	2016	
Timber Mills										
10	Burt Lum Co		Washington	GA	25	25	25	25	25	25
51	Pride of Florida		Raiford	FL	5	5	5	5	5	5
40	RB Lumber		Riceboro	GA	21	21	21	21	21	21
8	S I Storey Lum Co		Armuchee	GA	8	8	8	8	8	8
52	Tatum Bros Lum Co		Lawtey	FL	13	13	13	13	13	13
6	W D Cline & Sons Lum Co		Dalton	GA	5	5	5	5	5	5
Stud Mills										
44	Spanish Trail Lum Co	Grayson Lum Corp	Marianna/Cypress	FL	135	135	135	135	135	135
24	W M Sheppard Lum Co		Brooklet	GA	50	50	50	50	50	50
Dimension Mills										
33	Canfor	Balfour Lbr Co	Thomasville	GA	64	64	64	68	80	80
34	Canfor		Moultrie	GA	58	58	58	65	130	130
23	Claude Howard Lum Co		Statesboro	GA	70	70	70	70	92	100
42	Fleming Lum Co		Crestview	FL	12	12	12	12	12	12
9	GeorgiaPacficKoch Corp	International Paper	Rome	GA	180	180	190	190	190	190
13	GeorgiaPacficKoch Corp		Warrenton	GA	115	115	115	115	115	115
39	GeorgiaPacficKoch Corp		Sterling/Brunswick	GA	106	106	106	106	106	106
46	Gilman Building Prod Co		Perry	FL	95	95	95	95	100	100
50	Gilman Building Prod Co		Lake Butler	FL	100	100	100	100	105	105
55	Gilman Building Prod Co		Maxville	FL	95	95	95	100	105	105
20	Gilman Building Prod Co		Dudley	GA	108	108	115	115	120	120
29	Gilman Building Prod Co		Fitzgerald	GA	105	105	110	110	115	115
37	Gilman Building Prod Co		Blackshear	GA	108	108	115	115	120	120
49	Great South Tim & Lum	Daniels Lum	Lake City	FL	25	25	25	25	25	25
30	Griffin Lum Co		Cordele	GA	55	55	55	55	60	65
3	Hogan Lum Co		Cleveland	GA	4	4	4	4	4	4
32	Hood Industries	Metcalf Lbr Co	Metcalf	GA	90	90	90	90	90	90
15	Interfor	Rayonier	Eatonton	GA	90	90	90	90	90	90
18	Interfor	Keadle Lbr Enterpr	Thomaston	GA	80	80	80	160	160	160
19	Interfor	Tolleson Lum Co	Perry	GA	140	150	150	175	180	180
21	Interfor	Rayonier	Swainsboro	GA	123	123	120	120	120	120
26	Interfor	Simpson Tim Co	Meldrim	GA	124	124	124	125	125	125
28	Interfor	Rayonier	Baxley	GA	160	160	160	160	160	160
31	Interfor	Tolleson Lum Co	Preston	GA	225	225	225	225	225	225
17	Jordan Lum & Sup Co	Weyerhaeuser Co	Barnesville	GA	160	160	160	160	160	210
48	Klausner	Lumber One	Live Oak	FL					50	200
36	Langdale For Prod Co		Valdosta	GA	140	140	140	140	140	140
11	Pollard Lum Co		Appling	GA	50	50	50	50	50	50
43	Rex Lum LLC	U.S. For Ind	Graceville	FL	120	120	120	120	120	120
45	Rex Lum LLC	North Florida Lum Co	Bristol	FL	120	120	120	120	120	120
47	Suwannee Lum Mfg Co		Cross City	FL	150	150	150	150	150	150
38	Varn Wood Prod		Hoboken	GA	50	50	50	50	50	50
41	West Fraser Tim Co	International Pap Corp	McDavid	FL			25	100	145	145
54	West Fraser Tim Co	International Pap Corp	Whitehouse	FL	80	80	80	80	105	105
12	West Fraser Tim Co	International Pap Corp	Augusta	GA	137	137	137	137	140	140

Florida and Georgia, cont

Mill I.D.	Name	Former name or DBA	Location	Capacity / Production (MMBF)					
				2011	2012	2013	2014	2015	2016
Board Mills									
14	The Timbermen Inc		Camak GA	10	10	10	10	10	10
Specialty or Unknown									
7	Baldrige Bros		Dalton GA	2	2	2	2	2	2
56	Crossroads Sawmill		Land O'Lakes FL	5	5	5	5	5	5
53	Franklin Lum Co		Hilliard FL	3	3	3	3	3	3
35	Hubert Moore Lum Co		Alapaha GA	25	25	25	25	25	25
1	Irvin Lum Co		Cornelia GA	3	3	3	3	3	3
22	J W Exley Lum Co		Clyo GA	5	5	5	5	5	5
57	Kempfer Sawmill Inc		St Cloud FL			5	6	6	6
2	Mount Yonah Lum Co		Cleveland GA	8	8	8	8	8	8
27	Shearouse Lum Co		Pooler GA	8	8	8	8	8	8
4	Sparks Lum Co		Ellijay GA	5	5	5	5	5	5
5	Sutton Lum Co		Tenna GA	6	6	6	6	6	6

Softwood Lumber (MMBF)

	2011	2012	2013	2014	2015	2016
Estimated capacity	3,681	3,691	3,747	3,945	4,207	4,420
Reported output	na	na	na	na	na	na
Capacity utilization	na	na	na	na	na	na
Number of sawmills	52	52	54	54	55	55